

### Welcome to Stoneleigh at Mesquite!

Located on the east side of the Dallas/Fort Worth Metroplex, Stoneleigh at Mesquite is ideally situated in close proximity to four major highways: I-20, I-30, I-635, and U.S. Highway 80. Mesquite has long been recognized as a major retail area within the Dallas/Fort Worth Metroplex. Stoneleigh at Mesquite's strategic location provides easy access to the retail shops, movie theaters, Town East Mall, many fine restaurants, entertainment and work centers of Mesquite and beyond.

Welcome to Stoneleigh at Mesquite, where you can come home to privileged living and premier service.

**3700 Poteet Drive**

**Mesquite, Texas 75150**

**(972) 686-9200 Fax (972) 686-9210**

**email: Stoneleigh@myapartmenthome.com**

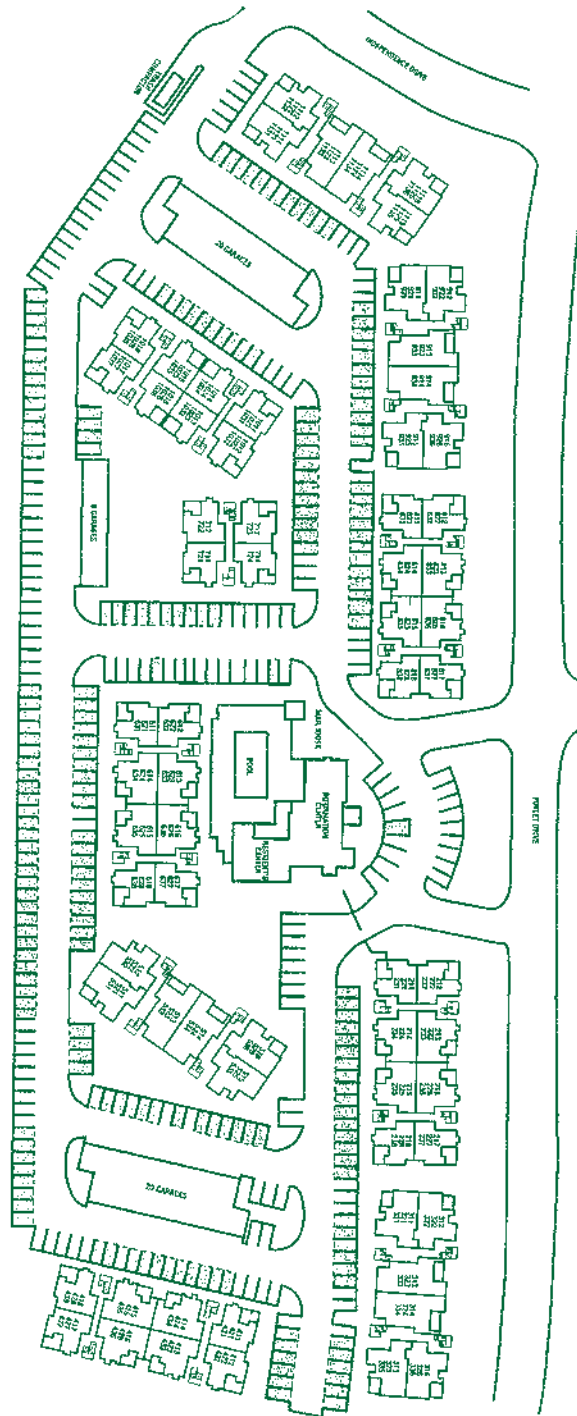
**web: www.MyStoneleighAtMesquite.com**

 **/MyStoneleighAtMesquite**

 **@myapartmenthome**

 **+StoneleighAtMesquiteApartments**

 **@MyApartmentHome**



# Stoneleigh at Mesquite

A P A R T M E N T S

*Strategic Location...  
Luxury Living...  
Premier Service...*

**3700 Poteet Drive**

**Mesquite, Texas 75150**

**Tel: (972) 686-9200**

**Fax: (972) 686-9210**

**E-Mail:**

**Stoneleigh@myapartmenthome.com**

**Website:**

**www.MyStoneleighAtMesquite.com**



# Stoneleigh at Mesquite

A P A R T M E N T S

3700 Potteet Drive  
 Mesquite, Texas 75150  
 (972) 686-9200 Fax (972) 686-9210  
 email: Stoneleigh@myapartmenthome.com  
 web: www.MyStoneleighAtMesquite.com

Stoneleigh At Mesquite offers  
 luxurious living and premier service

- 2" Faux Wood Blinds
- Faux Wood Floors
- Full Size Washer/Dryer Connections
- Spacious Walk-In Closets
- Ceiling Fans
- Icemakers
- Electronic Alarm System\*
- Crown Molding\*
- Garden Tubs
- Wood-Burning Fireplaces\*

\*Available in Select Units

This is a community built with  
 the privileges you deserve

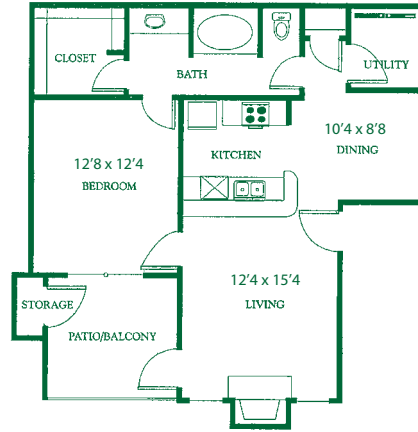
- Waterscaped Pool
- Luxurious Clubroom
- Fitness Center
- Resident Business Center
- Carport/Assigned Parking
- Detached Garages
- Playground
- Limited Access Gates
- Laundry Facilities
- Cable Available

\*Available in Select Units

## A1

1 Bedroom, 1 Bath, 726 Sq. Ft.

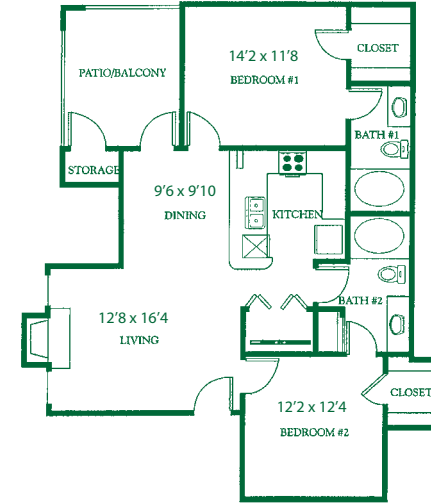
Rent \_\_\_\_\_ Deposit \_\_\_\_\_



## B2

2 Bedroom, 2 Bath, 962 Sq. Ft.

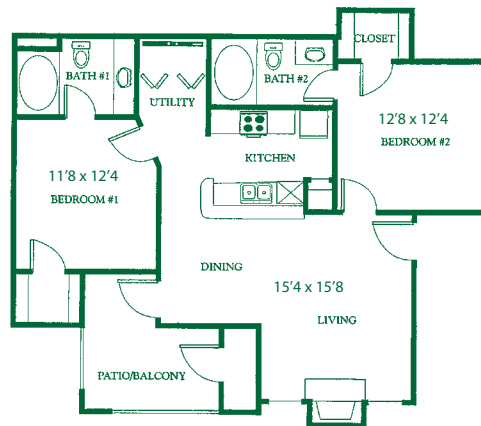
Rent \_\_\_\_\_ Deposit \_\_\_\_\_



## B1

2 Bedroom, 2 Bath, 900 Sq. Ft.

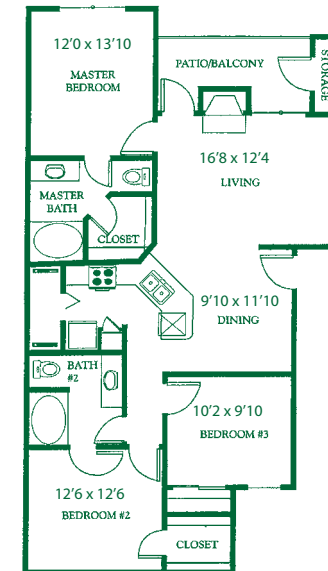
Rent \_\_\_\_\_ Deposit \_\_\_\_\_



## C1

3 Bedroom, 2 Bath, 1180 Sq. Ft.

Rent \_\_\_\_\_ Deposit \_\_\_\_\_



\*All square footage and room dimensions are approximate.